



SAN DIEGO MESA COLLEGE

Presentation to Mesa President's Cabinet

AANHPI-SAP

Asian American Native Hawaiian Pacific
Islander Student Achievement Program

May 21, 2024

Patricia "Trish" Guevarra, Assistant Professor/Counselor, Kapwa Counselor/Coordinator, AANAPISI Faculty Mentor
Leland Simpliciano, AANAPISI Director
Dr. Ailene Cua Crakes, Dean of Student Development



How we define equity



At San Diego Mesa College, equity is a fundamental value and goal. We will know we have achieved equity when we see parity in outcomes across racial/ethnic student groups and all student groups that have been historically marginalized within higher education. Our commitment to equity requires that minoritized students have access and support across all campus systems, from application to completion. We aim for equity in access and opportunities for all.

At Mesa, equity is student-centered. Our professional community respects students and their contributions, listens to students, and responds to students' different needs without stereotyping. We aim to provide opportunity to all students regardless of their educational goals. We are here to set students up for success and we acknowledge all the different facets of our students' identities.

We pursue equity through a culture of inquiry and data-informed decision making in the classroom and across campus areas. We are working to approach difficult conversations about systems of oppression with skill and humility. Mesa is committed to developing interventions based upon robust data collection and following through on our new ideas with inquiry into the success of their implementation. We aspire to work within integrated and equity-minded systems to ensure that everyone has what they need to succeed during their time at Mesa College.



SAN DIEGO MESA COLLEGE

SAN DIEGO MESA COLLEGE

WHAT IMPEDES EQUITABLE OUTCOMES

01 Covid

- Covid exacerbated racial inequities that impeded equitable outcomes for marginalized students.
- Many students experienced greater racial, social, and health inequities due to the pandemic.



02 Lack of Focus on Race

- Race-neutral approaches impeded Mesa College's efforts to improve minoritized students' outcomes.
- Mesa will continue to work closely with the office of institutional effectiveness and take a closer look at the equity gaps of the Black or African American, Hispanic or Latino/a, Asian, Native Hawaiian, or Pacific Islanders

03 Institutional Scope

- Mesa College continues working towards increasing the institutional scope of addressing racial inequities.
- The campus has begun efforts to work towards promoting Black, Latino/a, and AANHPI student success.
- By creating opportunities and increasing access to minoritized groups, we hope to specifically point to the student groups that face larger disparities, including racially minoritized and low-income students.

SAN DIEGO MESA COLLEGE

ACTION STEPS

01 Covid

- Determining ways to better serve our students.
- Utilizing resources and federal funds to create intentional spaces for our Black and Latino/a/e, and AANHPI student populations.

03 Institutional Scope

- Working towards promoting Black, Latino/a/e, and AANHPI student success.
- Creating opportunities and increasing access to minoritized groups
- Pointing to the student groups that face larger disparities, including racially minoritized and low-income students.

02 Lack of Focus on Race

- Focusing on race and integrated planning with campus initiatives designed to improve outcomes for our marginalized students.
- Integrations with Mesa Pathways, Mesa 2030, Enrollment Management, Strong Workforce, HSI/Title V, AANAPISI, and AANHPI-SAP.



MESA AANHPI-SAP TEAM

Asian American Native Hawaiian Pacific Islander Student Achievement Program



ANDREW GENE AREVALO
WBL Project Assistant



LEILANI MAANAO
Outreach Ambassador/
APD President



RAELENE MAKAYLA MANCILLA
AAPI Tutor/Embedded
Tutor in Kapwa/Writing
Center Tutor



DEREK PHAM
Peer Navigator/AAPI
Mentor



KATHRINNA SUSANTO
AANAPISI Peer Navigator



ALEXI BALAGUER
Cruise/AVANZA SSA



BRIN BALBOA
Project Assistant



HAI DUONG
Graphic Artist



ADRIANA CAETANO FOURNIER
Research & Planning
Analyst



KYUNG AE JUN
Research & Planning
Analyst



**OLIVE ROYCE
PAYNES-GINDELBERGER**
Student Success Specialist



JUSTIN RAPOLLA
SSA, Gen. Coounseling



PATRICIA "TRISH" GUEVARRA
Assistant Professor/Counselor
Kapwa Counselor/Coordinator
AANAPISI Faculty Mentor



KATLIN CHOI
Associate Professor
Work-Based Learning
Coordinator



ELLA DE CASTRO
English Faculty



JENNIFER DERILO
English Professor



ADRIENNE DINES
Counselor & Acting
Articulation Officer



VERA HANAOKA
Languages



GLORIA KIM
History Professor



MASUMMA MOHAMMADI
Counselor



MARC PESCADERA
Mental Health Counselor
AANHPI and Veterans



RANMALI RODRIGO
English Professorr



VANG THAO
Counselor



HAI LY TRAN
Assistant Professor
Ethnic Studies/AAPI
Faculty



MICHAEL WILLIAMS
Biology Asst. Professor



ANDREW MALINIS
AANIPISI Counselor



LELAND SIMPLICIANO
AANAPISI Director



HAI HOANG
Dean,
Institutional Effectiveness



LINDA HENSLEY
Dean of Humanities

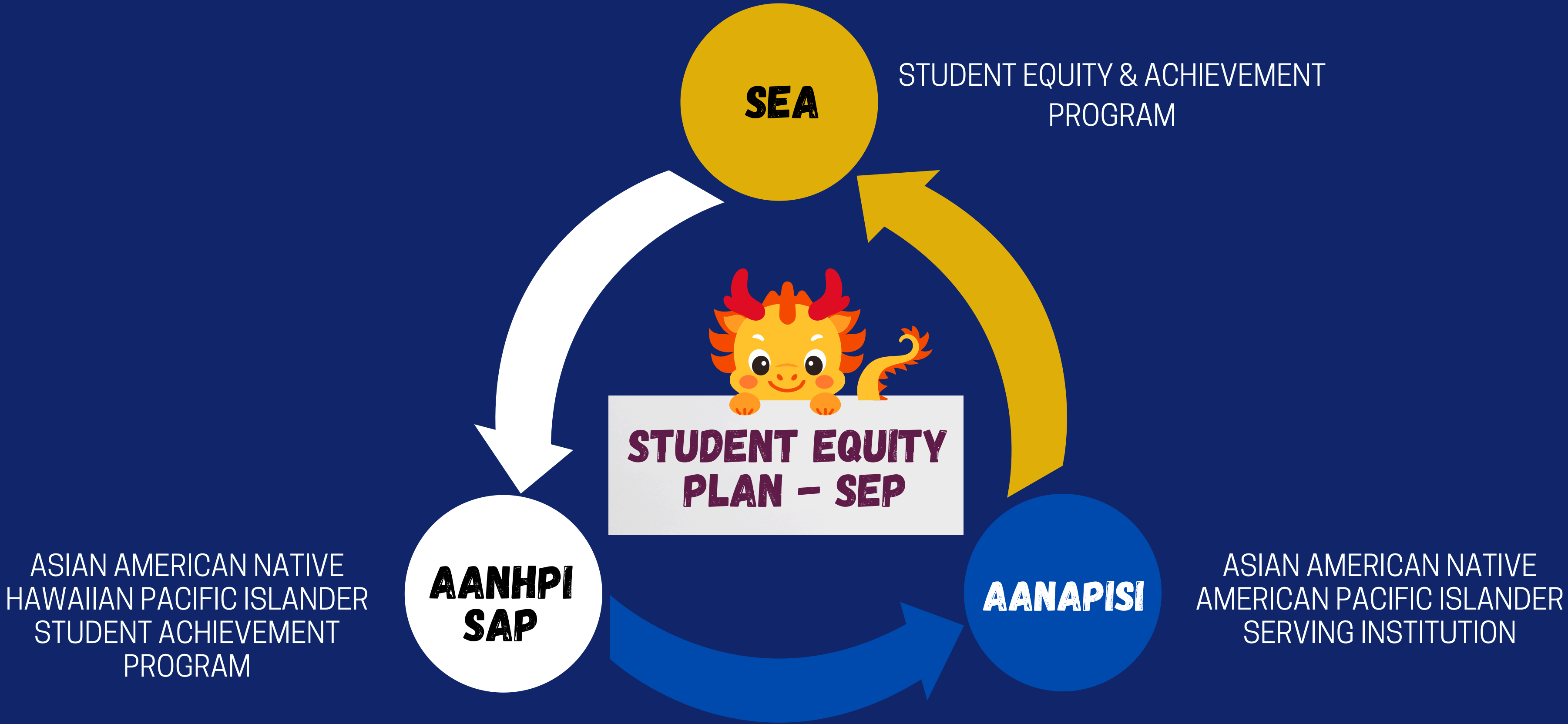


AILENE CUA CRAKES
Dean,
Student Development



LORENZE LEGASPI
Vice President
Administrative Services

SAN DIEGO MESA COLLEGE



AANHPI-SAP

Asian American Native Hawaiian Pacific Islander Student Achievement Program

Examples of Expenditures

Instruction

1. San Diego Regional AAPI Studies Summit
2. AAPI Reassigned Time
3. Community of Practice

Student Support Services

1. Adjunct Counselor - education and career counseling
2. Support for AANHPI students beyond LC
3. Mental Health Counselor
4. Outreach Ambassador
5. Project Assistant to support Kapwa Counselor and Faculty Mentor Coordinator
6. Campus Quest
7. ARC Stoles, Certificates, Supplies, Catering, Legendary Lion Dance



AANHPI-SAP

Asian American Native Hawaiian Pacific Islander Student Achievement Program

Examples of Expenditures

Professional Development/Learning

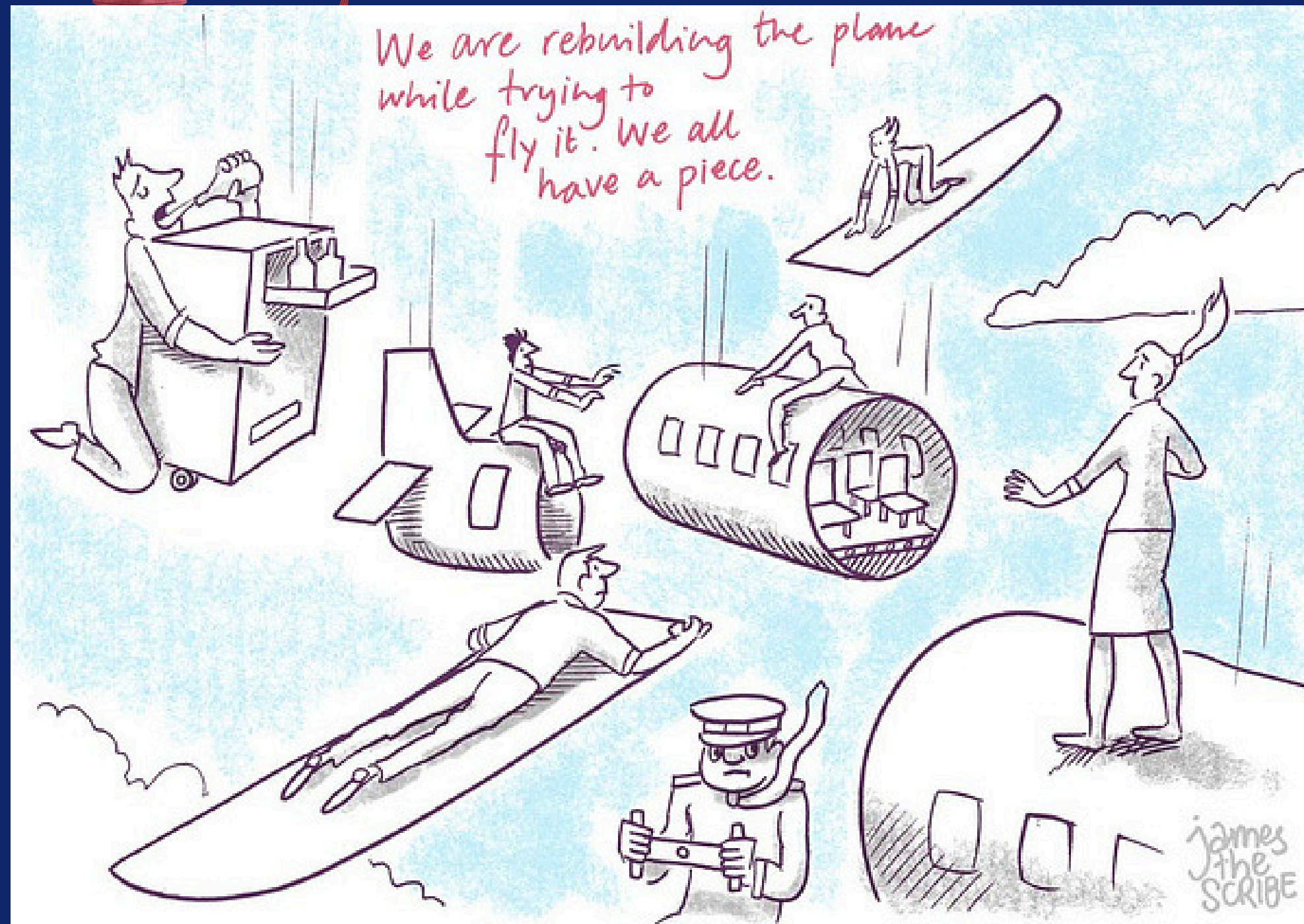
1. 2024 APAHE National Conference
2. UCLA STOMP Conference
3. Fullbright AANHPI Institutions Training
4. SDICCCA intern to support AANHPI - SAP
5. Regional Convening in Fall 2024

Involvement & Others

1. Resource Guide
2. Meeting with External Evaluator
3. Meeting with CCC Foundation for AANHPI-SAP
4. Consultant for SD Region for AANHPI-SAP
5. 2024 National Conference APAHE Tri-Chair
6. AANHPI Fall Regional Convening

AANHPI-SAP Supporting AANAPISI Efforts

"Building the plane as we're flying"



Transitions

- Leadership
- Vision
- Funding



AANHPI-SAP Supporting AANAPISI Grant Efforts



Funding Support

- AAPI Studies Summit, Curriculum Development
- Conference
 - APAHE Conference
 - Fulbright Summit
- Community of Practice | Spots Available!



ASIAN AMERICAN PACIFIC ISLANDER (AAPi) COMMUNITY OF PRACTICE

APPLICATION OPEN

Join us as we learn best practices to better serve our third-largest student population at Mesa College!

DATE & LOCATION

- August 6 & 7
- San Diego Mesa College: LOFT

COMMITMENT

- 2 Day Summer Intensive
- Semester Support Check-Ins (Monthly)

BENEFITS

- Understand the needs of our diverse AAPI students
- Learn about campus resources and programs to support AAPI students
- Stipend Included

RSVP BY

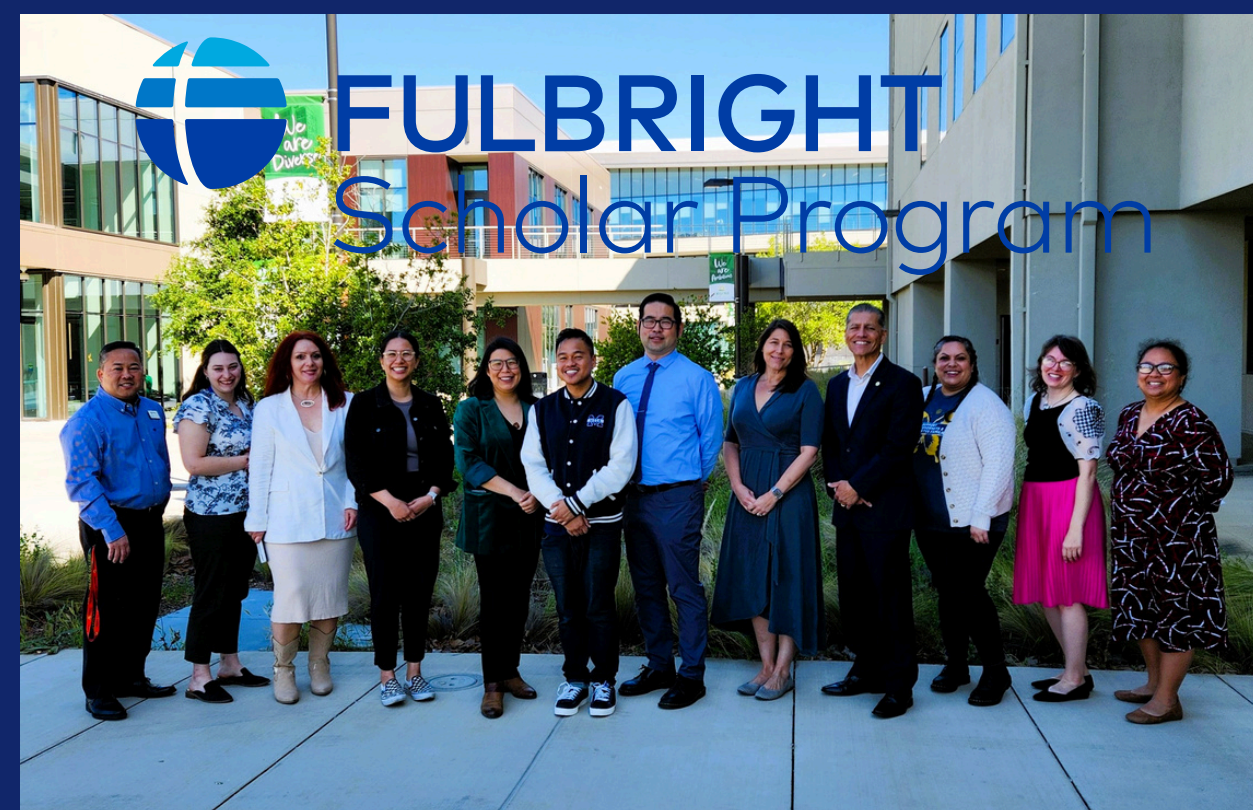
- May 31st, 2024 | 5:00pm
- 20 Applicants Selected!

RSVP Here

<https://forms.office.com/r/yjVGGDs7dP>

Contact

Leland Simpliciano | (619) 388-2406
lsimpliciano@sdccd.edu



AANHPI-SAP

Asian American Native Hawaiian Pacific Islander Student Achievement Program

Student Feedback



LEILANI MAANAO



AEDEN NGUYEN



JIMMY MARTINEZ



our
STORY
BEGINS
here

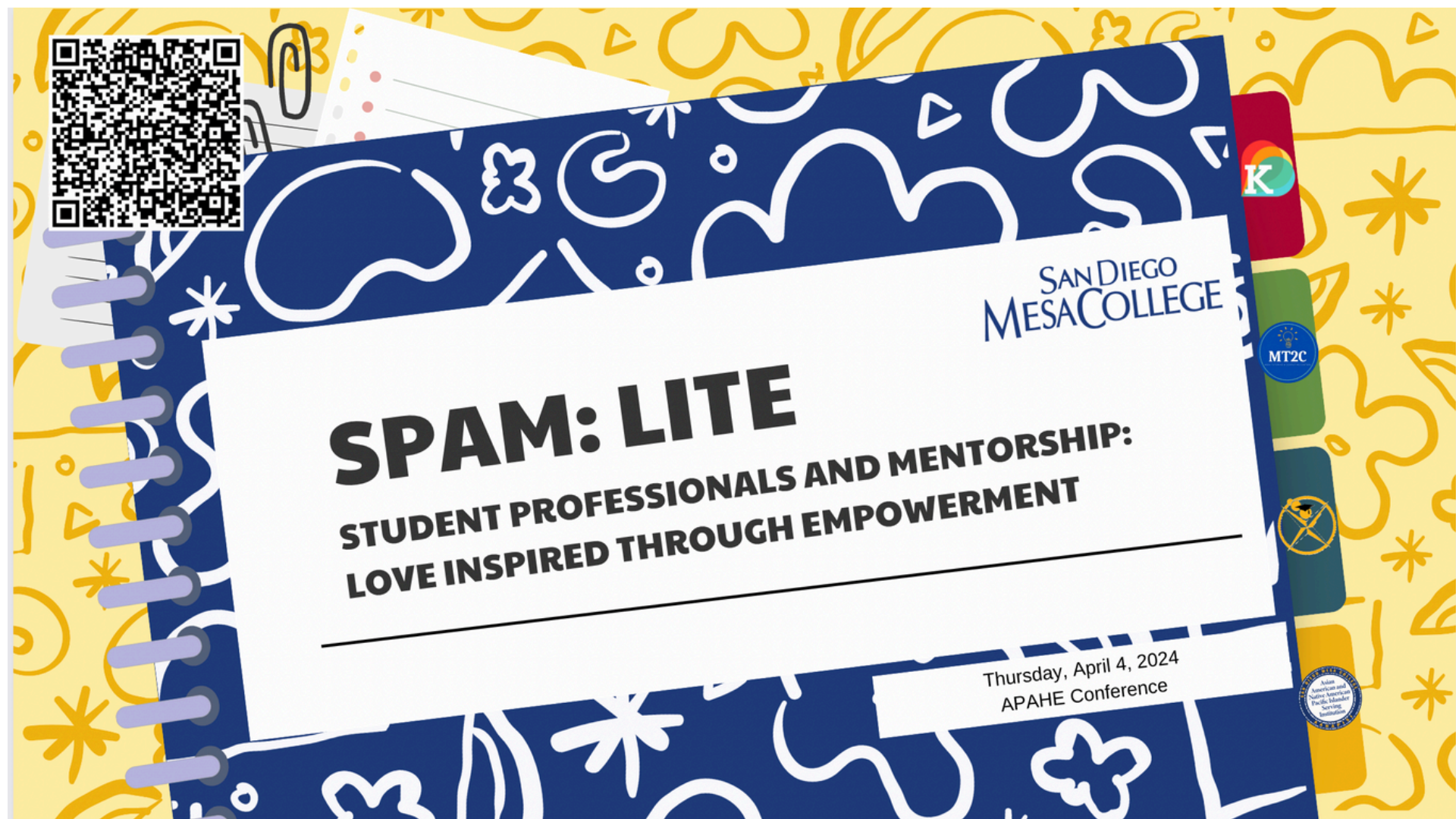
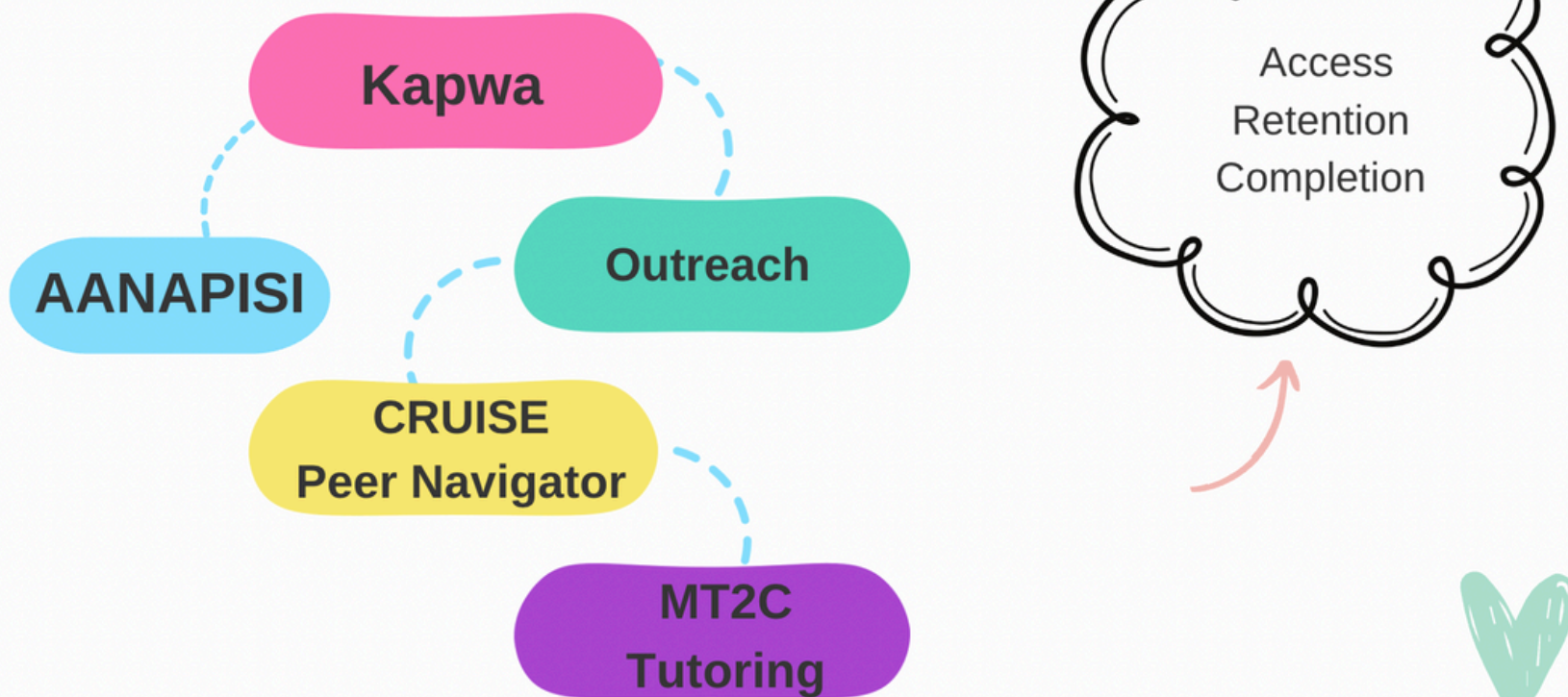




Student employment opportunities offer a sense of purpose and professional development for AANHPI students

- Seizing student employment opportunities at Mesa College allowed us as students to gain valuable professional skills and continue to support our AANHPI community
- Experiencing new things and overcoming challenges to gain benefits
- Connecting with mentors helped us look for and get these jobs
- Using these strategies, seek and implement similar opportunities on your campus

PARTNERSHIPS





SCAN ME

Taking Care of Our Own

Culturally Nurturing Counseling + Work-Based Learning Practices

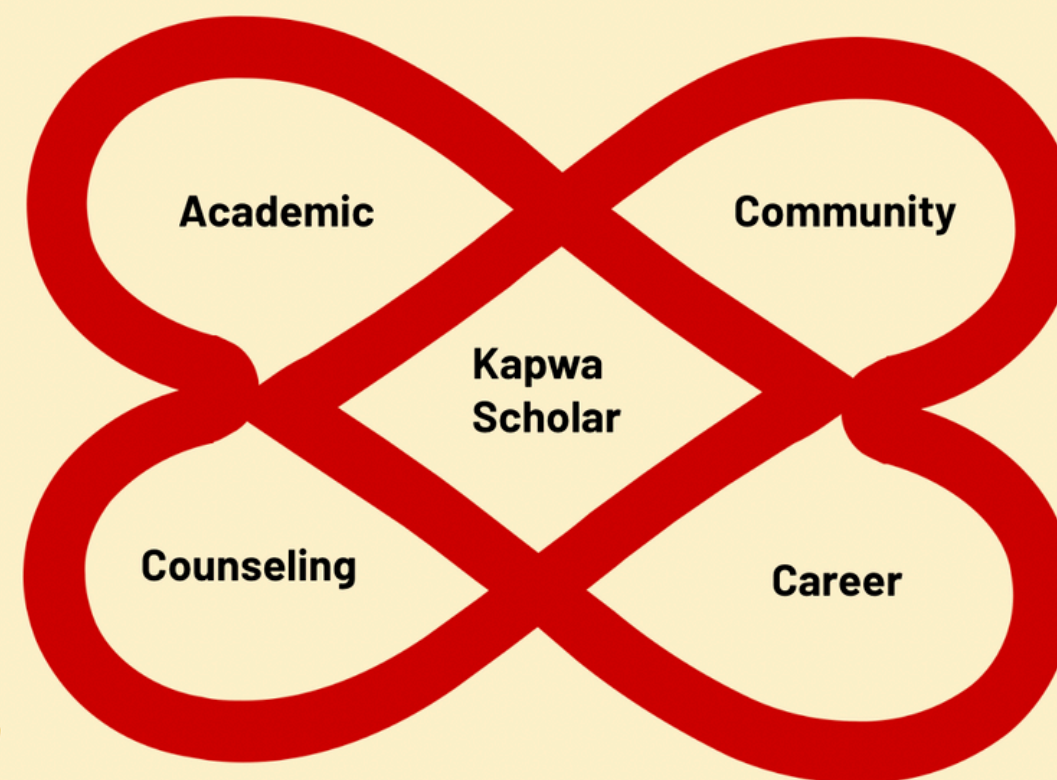
APAHE Conference | April 4, 2024 | Oakland, CA

Project Assistant Andrew Arevalo
Wellness Counselor Marc Pescadera
Professor Patricia (Trish) Guevarra
Professor Katlin Choi



SAN DIEGO
MESA COLLEGE

Kapwa Model



Academic: English, Asian American & Pacific Islander Studies, Counseling/Personal Growth, English Tutoring

Counseling: Academic, Wellness, Healing Circles, Career, Personal, Transfer, Embedded Counseling

Community: Culturally relevant events such as Model Minority Myth Panel, Healing Circles, Civic Engagement Projects, Ates/Kuyas/Role Models, Mentoring, AAPI Town Halls

Career: Civic Engagement projects, Capstone projects, Careering While Asian/Asian Womxn panels, Kapwa Scholars Summit, Odyssey Planning Workshops



WELCOME

Kokua from the Mainland:

Sending prayers and action to those impacted by the Maui Wildfires

APAHE National Conference 2024

Education Journey Leading to Radical Hope & Compassion:

“Igniting the spark of hope”

Our group's project stemmed from a pathway of education. As we were given more depth of the situation, we understood the lack of coverage and strived to amplify and advocate for the support and rehabilitation of the island.



Introductions:



Dr. Hai-Ly Tran
AAPI Studies Professor
for Kapwa



Leland Simpliciano
AANAPISI Director



Ella DeCastro Baron
English Professor
for Kapwa

Our Team:



Keira



Ashlyn



Cristine



Richard P.



Richard V.



Desiree



Jimmy M.



Greyson



Everett
and Jones





Thank
You

Special thanks to: Student Equity, Student
Development, VPI, VPAS, and AANAPISI

AANHPI-SAP

Asian American Native Hawaiian Pacific Islander Student Achievement Program

UCLA STOMP Conference

1. Kapwa x Umoja x Puente Collaboration
2. Presentations from Transfer Students
3. UCLA Campus Tour
4. Strengthened Partnership with UCLA Center for Community College Partnerships



AANHPI-SAP

Asian American Native Hawaiian Pacific Islander Student Achievement Program

KAPWA SPOTLIGHTS

- 9 students presented at a APAHE
- 2 Scholarship recipients
- 2 students hired as incoming peer navigators
- 1 student accepted to Medical Assisting Program
- Maya Lin Convoy Project received an invitation to Convoy Zine Night
- Art Major invited to paint electric boxes in Convoy
- 7 new student leaders in APD and Lion Dance

New Partnerships: Prof. Rodrigo (Engl), Prof. Kim (Hist), and Prof. Williams (Bio)



Kapwa x ENGL 205 x HIST 123 Collab







SAN DIEGO MESA COLLEGE

AANHPI-SAP

Asian American Native Hawaiian Pacific
Islander Student Achievement Program



Thank You!

