

# SAN DIEGO MESA COLLEGE



**Rooted In Purpose. Grounded In Equity. Growing Together.**



# LAND ACKNOWLEDGMENT

We, at San Diego Mesa College, acknowledge that the land we occupy is unceded territory of the Kumeyaay people, indigenous to this region from time immemorial.

The Kumeyaay people continue to demonstrate strength in their ability to surmount generational trauma, which started with the injustices of colonization and continues to this day.

The relationship of the Kumeyaay people with the land underlies their strong commitment to protect the land, preserve their heritage, and work for balance and harmony.

This land acknowledgment is our commitment to honor the Kumeyaay people and to establish a relationship with them based on truth and mutual respect



# WELCOME!

**Ashanti Hands, Ed.D**

President, San Diego Mesa College

**Mary Gwin**

President, Academic Senate

**Ayana Woods**

President, Classified Senate

**Ramiah Wilson**

Senator, Associated Students

**8:00 a.m. - 8:30 a.m.**

Pastries and Fellowship

**8:30 a.m. - 10:00 a.m.**

Program

- Land Acknowledgement
- Campus Highlights, Updated, and Olympian Spirit Awards

**10:00 a.m. - 10:30 a.m.**

SDCCD Visit

**10:30 a.m. - 10:40 a.m.**

Breakout Instruction and Transition Time

**10:40 a.m. - 11:25 a.m.**

Breakout Sessions I

**11:25 a.m. - 11:30 a.m.**

Transition

**11:30 a.m. - 12:15 p.m.**

Breakout Sessions II

**12:20 p.m. - 1:00 p.m.**

Lunch and Fun on the Mesa Quad





# SENATE WELCOMES



**Mary Gwin**  
President  
Academic Senate



**Ayana Woods**  
President  
Classified Senate



**Ramiah Wilson**  
Senator  
Associated Students



Rooted in Purpose. Grounded in Equity. Growing Together.

**ROOTED IN PURPOSE.**  
**GROUNDING IN EQUITY.**  
**GROWING TOGETHER.**



Rooted in Purpose. Grounded in Equity. Growing Together.

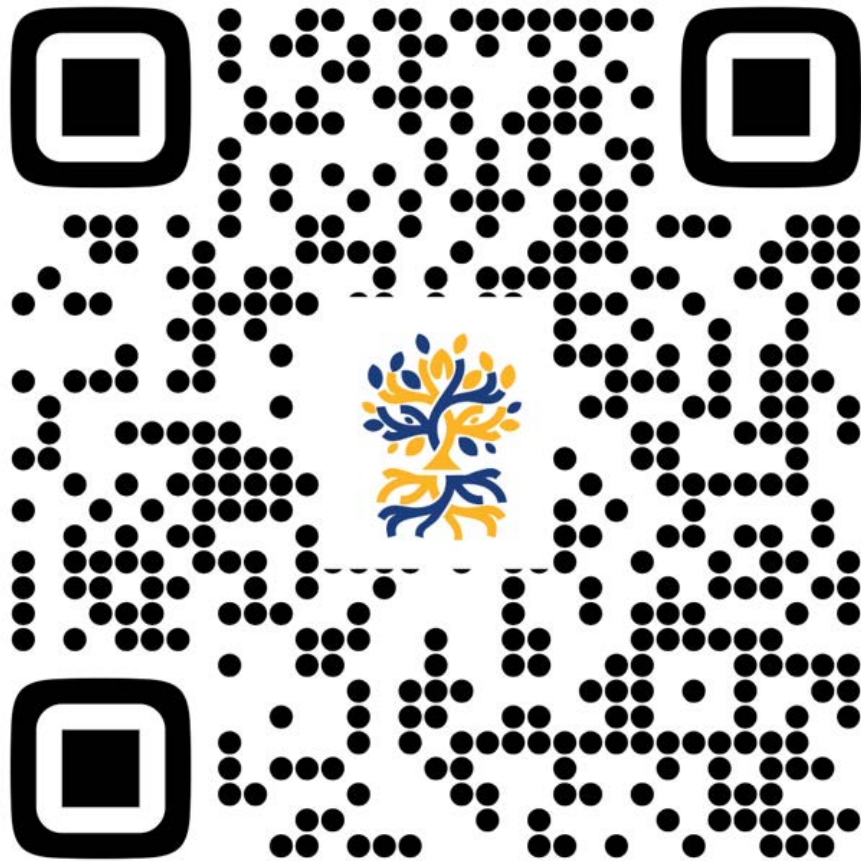


**ROOTED IN PURPOSE.  
GROUNDED IN EQUITY.  
GROWING TOGETHER.**

Rootedness gives us the foundation to withstand life's storms, and the nourishment to grow, lead, and flourish.

Being rooted is not being still, it means moving with intention, anchored in what matters most, and known by the integrity of how we show up.

Our roots are intertwined. We grow stronger together, grounded in shared purpose, supported by community, and connected by the values we hold common. - Ashanti Hands



# Fall 2025 Convocation Documents

## 2024-2025 PRESIDENT GOALS

- Achieve full reaffirmation of our accreditation status.
- Foster an equity-minded, data-driven culture.
- Launch 2nd Baccalaureate degree in Physical Therapy Assistant.
- Strengthen Emergency Preparedness and Campus Safety Infrastructure and campus communication.
- Lead a successful Mesa College Bond Campaign and 60th Anniversary Celebration.
- Fundraising, Philanthropy and Relationship Cultivation for Benefit of our College.
- Sustain momentum in enrollment management, Mesa2023 and budget transparency.
- Create space for courageous and purposeful leadership among college administrators.

**ROOTED IN PURPOSE. GROUNDED IN EQUITY. GROWING TOGETHER.**

## 2025-2026 Executive Leadership Goals

- Ashwini Hande, Ed.D., President**
- Uplifted Standards and Uplifted Access:**
- Sustain institutional momentum in securing full accreditation.
  - Advance initiatives that support access and elevate workforce, including the launch of Mesa's second baccalaureate degree.
- Institutional Advancement and Advocacy:**
- Support the San Diego Community College District's fundraising campaign, elevating Mesa College's priorities, planning, and engagement.
  - Foster transparency communication around key initiatives such as Measure 144.
- Strategic Planning and Inclusive Growth:**
- Advance Mesa2025 with a focused approach centered on equitable outcomes, supported by college-wide engagement.
  - Champion strategic enrollment efforts that support the access, success, and belonging of minoritized groups and adult learners.
  - Use storytelling to connect our work to purpose and vision.
- Rooted Leadership in Vision and a Defining Moment:**
- Lead with clarity, courage, and purpose, staying rooted in our vision and values while responding boldly to the needs of this moment.
- Robert De Los Angeles (Cabrera) Ph.D., Vice President, Instruction**
- Equity Enrollment of Latine Adult Learners:**
- Implement a targeted adult learner enrollment management plan to increase access and retention among Latine adult students, addressing systemic barriers and supporting educational attainment.
- Advance DEIAA Professional Development:**
- Continue to support Diversity, Equity, Inclusion, Accessibility, and Affirmation (DEIAA) professional development opportunities with the goal of reducing equity gaps and fostering a more inclusive learning environment.
- Promote Instructional Excellence and Visibility:**
- Effectively tell the story of instruction by highlighting achievements, innovations, and impact, thereby increasing the visibility and recognition of instructional programs across the institution and community.
- Implement Legislative Initiatives with Integrity and Equity:**
- Ensure the timely and equitable implementation of state legislative mandates, maintaining a student-centered focus while upholding institutional values and compliance.
- Coordinate Student-Centered Scheduling:**
- Collaborate across programs and schools to streamline scheduling practices, ensuring that course offerings are aligned with student needs, improve access, and support timely completion.
- Lead Stakeholder Instructional Leadership:**
- Continue to provide leadership within the California Community College system by serving as President of the California Community College Chief Instructional Officers (CICCO), advocating for instructional excellence and systemic improvement.
- Leery E. Moore III, Vice President, Student Services**
- Establish 2023-2026 as the Year of Transition:**
- Foster and support of student services programs to oversee and intentionally enhance transfer outcomes throughout the academic year.
  - Lead efforts to establish and strengthen transfer partnerships that focus on providing equitable transfer opportunities for all students.
- Strengthen Partnership with the Business Office:**
- Build a positive working relationship to improve program budget management and oversight.
- Strategic Planning and Equity Focus:**
- Advance Mesa's 2020 strategic vision with a dedicated focus on achieving equitable outcomes, supported by broad college-wide engagement.
  - Lead strategic initiatives aligned with the 2023-2024 Student Equity Plan.
  - Focus on building community partnerships that promote and support the college's equity mission.

Rooted in Purpose. Grounded in Equity. Growing Together.

## Quick Glance - Fall 2024

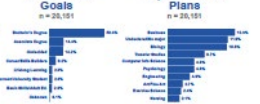


SAN DIEGO MESA COLLEGE

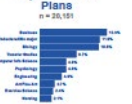
### Ethnicity



### Educational Goals



### Top Academic Plans



## Three Year Fall Trends - Fall 2022 to Fall 2024



Source: Student Characteristics Dashboard and SDCS Enrollment Management Dashboard.



Rooted in Purpose. Grounded in Equity. Growing Together.

# Our Story in Data





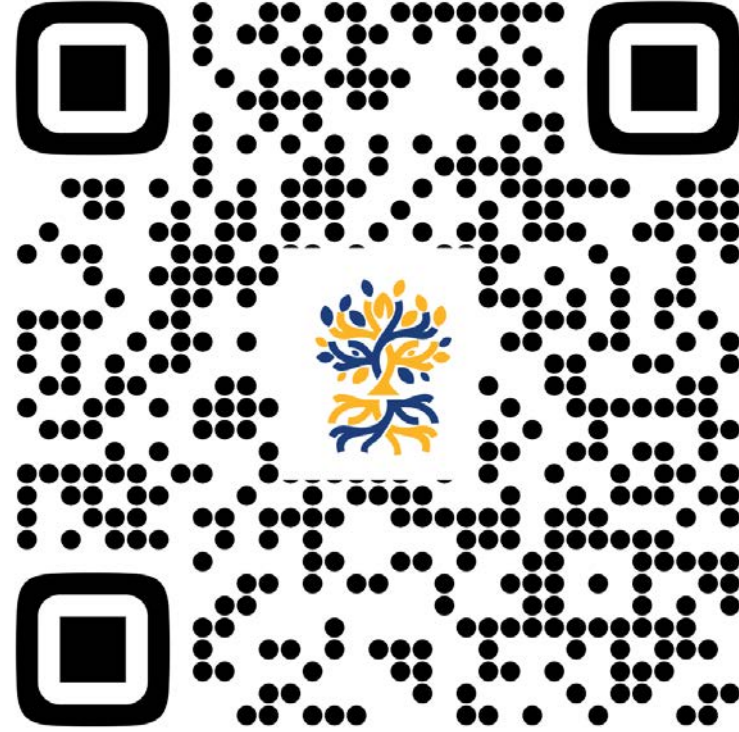
# 2024-25 Igniting our Light

## 2024-2025 PRESIDENT GOALS

- Achieve full reaffirmation of our accreditation status.
- Foster an equity-minded, data-driven culture.
- Launch 2nd Baccalaureate degree in Physical Therapy Assistant.
- Strengthen Emergency Preparedness and Campus Safety Infrastructure and campus communication.
- Lead a successful Mesa College Bond Campaign and 60th Anniversary Celebration.
- Fundraising, Philanthropy and Relationship Cultivation for Benefit of our College.
- Sustain momentum in enrollment management, Mesa2023 and budget transparency.
- Create space for courageous and purposeful leadership among college administrators.



ROOTED IN PURPOSE. GROUNDED IN EQUITY. GROWING TOGETHER.



**Rooted in Purpose. Grounded in Equity. Growing Together.**

# Our Roots are Bearing Fruit

- Carnegie Classification: Mixed, Associate Large Institution (2% of U.S. Institutions) + Higher Access, Medium Earnings
- #2 two-year college athletic program in the nation
- Top 3 in CA for Return on Investment
- IEPI Grant with a focus on Adult Learners
- Rising Scholar & Star TRIO Grants
- HSI & BSI Applications Submitted
- Psi Beta Chapter Leadership & Chapter Excellence Award
- HEED Award for Diversity & Inclusion
- SDSU, ASU & PNU Partnerships



# Nourishing the Roots - Our Goals



2025-2026

## Executive Leadership Goals

Ashanti Hands, Ed.D. | President

### Uphold Standards and Expand Access

- Sustain institutional momentum in securing full accreditation
- Advance initiatives that expand access and elevate excellence, including the launch of Mesa's second baccalaureate degree campaign, elevating Mesa College's priorities, planning, and strategic Measure HH.

### Institutional Advancement and Advocacy

- Support the San Diego Community College District's fundraising campaign, elevating Mesa College's participation and engagement.
- Foster transparent communication around key initiatives such as Measure HH.

### Strategic Planning and Inclusive Growth

- Advance Mesa2030 with a focused approach centered on equitable outcomes, supported by college-wide engagement.
- Champion strategic enrollment efforts that support the access, success, and belonging of minoritized groups.
- Use storytelling to connect our work to purpose and vision.

### Rooted Leadership in Vision and a Defining Moment

- Lead with clarity, courage, and purpose, staying rooted in our vision and values while responding boldly to the moment.



including the launch of Mesa's second baccalaureate degree campaign, elevating Mesa College's priorities, planning, and strategic Measure HH.

able outcomes, supported by college-wide engagement efforts, success, and belonging of minoritized groups and adult learners, and values while responding boldly to the needs of this moment.

#### Instruction

use access and retention among Latinx adult students, and tacitism (DEIAA) professional development opportunities with environment.

ivations, and impact, thereby increasing the visibility and equity.

dates, maintaining a student-centered focus while upholding equity, ensuring that course offerings are aligned with student needs.

is system by serving as President of the California Community College System's National Excellence and Systemic Improvement.

and intentionally enhance transfer outcomes throughout the system, with a focus on providing equitable transfer opportunities for all students.

at management and oversight.

- Advance Mesa's 2030 strategic vision with a dedicated focus on achieving equitable outcomes, supported by broad college-wide engagement.
- Lead strategic initiatives aligned with the 2025-2026 Student Equity Plan.
- Focus on building community partnerships that promote and support the college's equity mission.



Rooted in Purpose. Grounded in Equity. Growing Together.



# Meeting this Moment



**ROOTED IN PURPOSE.  
GROUNDED IN EQUITY.  
GROWING TOGETHER.**

**Access Accountability Diversity Equity Excellence Freedom of Expression Integrity Respect Scholarship Sustainability**



# Opportunity Drawing



---

Rooted in Purpose. Grounded in Equity. Growing Together.

---

# **WELCOME OUR NEWEST MEMBERS TO THE MESA FAMILY**



Rooted In Purpose. Grounded In Equity. Growing Together.



# WELCOME NEW FACULTY



Hunter Alzate  
Computer Information Systems



Grace Aumpeualogo  
Counseling



Krystle Marshall Jones  
English



Veracruz Sanchez  
English



Lien Vo  
Nurse Practitioner

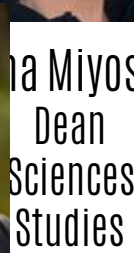
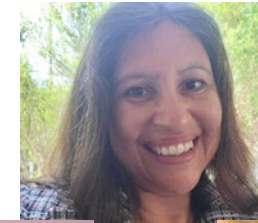


Cameron York  
Art



Rooted in Purpose. Grounded in Equity. Growing Together.

# WELCOME NEW LEADERSHIP



Jill Moreno-Ikeda  
Acting Dean  
Humanities



Cynthia Rico  
Dean  
Student Development

Dina Miyoshi  
Dean  
Social/Behavioral  
Sciences and Multicultural  
Studies

Cynthia Rico  
Dean  
Student Development



Nicole Roesler  
Director  
Administrative Services

Nicole Roesler  
Director  
Administrative Services

Leslie Shimazaki  
Interim Dean  
Arts and Languages



Leslie Shimazaki  
Interim Dean  
Arts and Languages

Tara Hardee Teodoro  
Dean  
Instruction



Rooted in Purpose. Grounded in Equity. Growing Together.



# WELCOME NEW AND PROMOTED CLASSIFIED PROFESSIONALS



Lauren Bellan  
Sr. SSA - Admissions  
(Promotion)



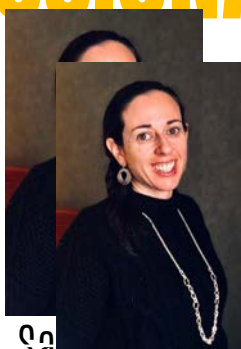
Catherine Cannock  
Admin. Asst. V - VPAS  
(Promotion)



Louis J. Flores-Arzola  
SAT - Financial Aid  
(Promotion)



Thomas Hartzell  
Admin. Tech - Business  
Services (Promotion)



Sarah Hood  
Administrative Technician  
Dean of Instruction



Kiana Kikuchi  
Administrative Technician  
Resource Development



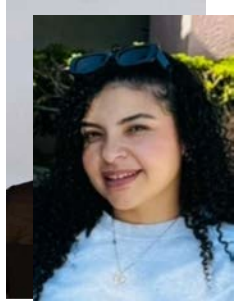
Paul Morgano  
Theater Technician



Treyvon Murriel  
SAT - Financial Aid  
(Promotion)



Thanh (Mimi) Vu  
Program Support Tech - Mental  
Health (Promotion)



Mazi Zedekes  
Sr. SSA - Admissions  
(Promotion)



Rooted in Purpose. Grounded in Equity. Growing Together.

# COLLEGE PRIORITIES



Rooted in Purpose. Grounded in Equity. Growing Together.

# ACCREDITATION

ASSOCIATE DEAN **NANCY CORTÉS**



Rooted In Purpose. Grounded In Equity. Growing Together.



A top-down view of a group of people's hands stacked in a circle. The hands are of various skin tones. Most are wearing blue wristbands with the text 'SD MESA' printed on them. One hand in the center has a silver ring on the ring finger. The background is a blurred outdoor setting.

Institutional Effectiveness Update

**Accreditation | Learning Outcomes**



# To Achieve Full ACCJC Compliance

## The Requirement By 10/01/25

Learning outcomes  
in Syllabi



Learning outcomes  
in Course Outline of Record

Follow the established  
assessment process



Use the assessment results  
to improve programs & courses

## The Approach

### Current Status

Understand & clarify  
the current problems



People  
System  
Accountability

### Where We Need to Be

Understand & clarify  
the goals



# What We Did

# A LOT

Academic Senate	Alexander Berry	Hai Hoang	Lorenze Legaspi
Academic Affairs	Andrew Hoffman	Ian Duckles	Lorie Howell
COA	Ashanti Hands	Isabel O'Connor	Mandy Johnston
CRC	Blythe Barton	Jacqueline Collins	Mary Gwin
PCAB	Cassandra Storey	Janue Johnson	Monica Romero
PIEC	Catherine Cannock	Jennifer Carmichael	Nathan Resch
PRSC	Celine Ahearn	Jill Moreno	Ryan Shumaker
Deans' Council	Cynthia Rico	Justin Estep	Shelly Hess
DOCs, Chairs	Denise Rogers	Katie Palacios	Toni Parsons
Admin Assistants	Desiree Payne	Larry Maxey	Vicki Miller
Managers	Dina Miyoshi	Leticia Diaz	
	Eliza Rabinovich	Linda Hensley	



Rooted in Purpose. Grounded in Equity. Growing Together.

# Intentional Efforts, Expected Results

August 2024



76

Student Services  
Outcomes (SSOs)

% of SSOs with Benchmarks

\*22 benchmarks



% of SSOs with Results

\*10 results



August 2025



66

Student Services  
Outcomes (SSOs)

% of SSOs with Benchmarks

\*63 benchmarks



% of SSOs with Results

\*58 results



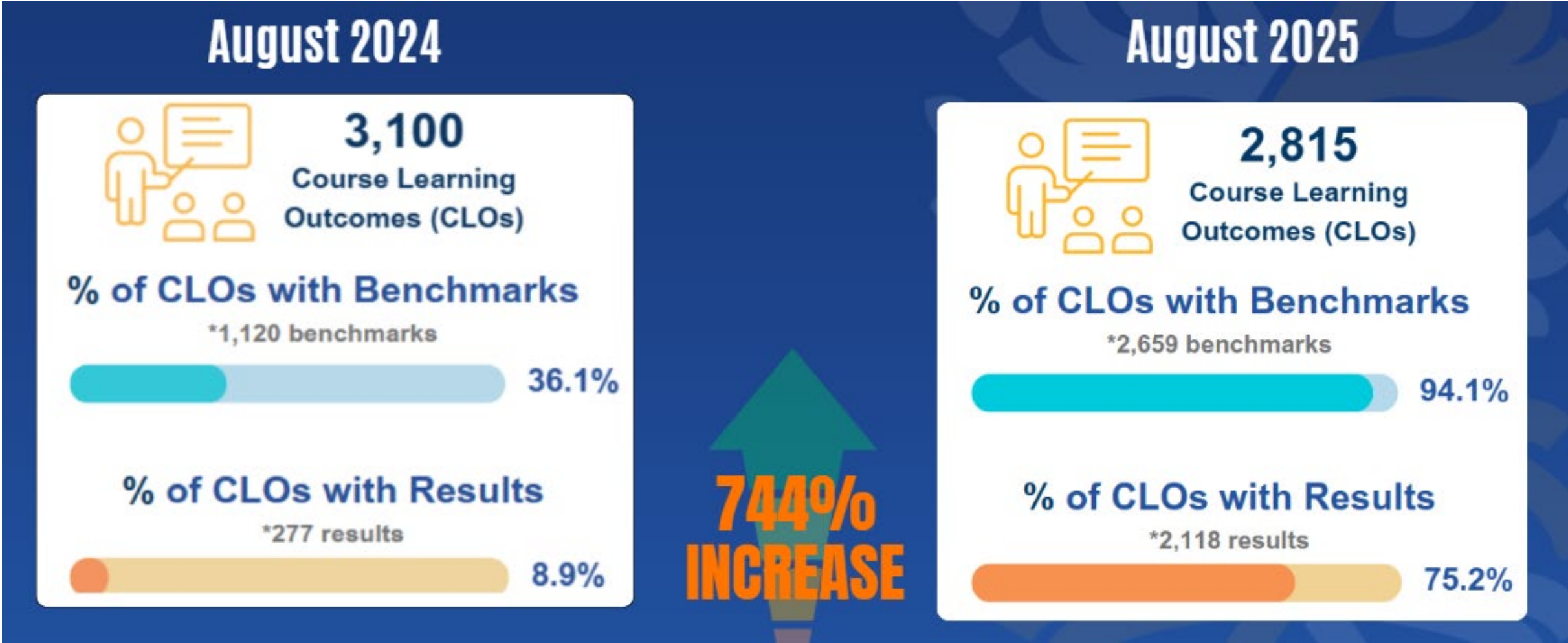
566%  
INCREASE



Rooted in Purpose. Grounded in Equity. Growing Together.



# Intentional Efforts, Expected Results





# ACCJC Compliance: Next Steps

- **ACCJC Follow-up Report Submission:** September 15
- **ACCJC Site Visit:** October 27
- **Visiting Team Composition:** one president, one dean, two faculty, one ACCJC staff

## Scenario 1

***Successfully address the requirements***

Reaffirmation for the remainder of the cycle

## Scenario 2

***Fail to address the requirements***

a. *Defer Action*, OR

b. *Sanction* (Warning, Probation, or Show Cause)



# Finish Strong: Year 4 of 4

## Closing This Timeline, Preparing for the Next

**To Learn More**  
**Join Breakout Session: SB106**  
**Contact Liza Rabinovich**

### Instruction Faculty

- Ensure outcomes in syllabi match outcomes in Nuventive

### Everyone:

- Discuss Spring 25 assessment results
- Assess all remaining outcomes (CLOs, SSOs, and PLOs)
- Review, Revise, Reaffirm outcomes (effective Fall 26)



Rooted in Purpose. Grounded in Equity. Growing Together.

# ***THANK YOU***

# MESA2030

VICE PRESIDENT **LORENZE LEGASPI**



Rooted In Purpose. Grounded In Equity. Growing Together.



# Roadmap Purpose

## Task at Hand:

- Roadmap to close out Mesa2030: Fall 2026 – Spring 2030
- How do we realize, track, utilize, and tell story of Mesa2030



Rooted in Purpose. Grounded in Equity. Growing Together.





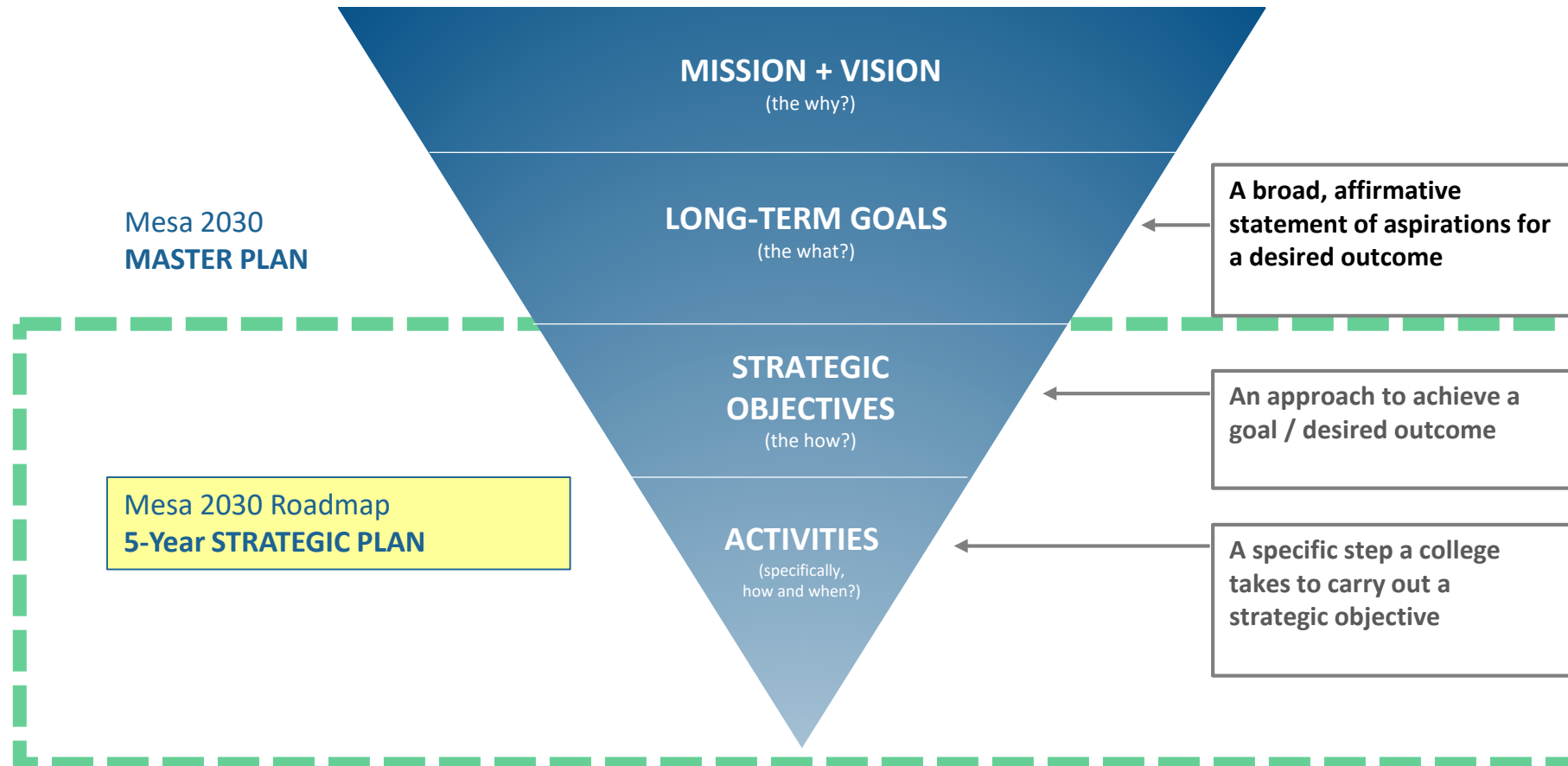
# MESA2030 LONG-TERM GOALS

## MESA 2030 GOALS: Framework for Long-term Planning



Rooted in Purpose. Grounded in Equity. Growing Together.

# SHARED VOCABULARY



Rooted in Purpose. Grounded in Equity. Growing Together.

# SIMPLIFYING METRICS THAT MATTER

- Focus on high-leverage, cross-initiative metrics
- Integrate Spring PCAB Retreat insights



Rooted in Purpose. Grounded in Equity. Growing Together.

# FOCUS AND STORYTELLING

## FOCUS

- Objectivity
- Scalability
- Plan Alignment
- Initiative Fatigue
- Collaboration

## STORYTELLING



Rooted in Purpose. Grounded in Equity. Growing Together.



# TIMELINE

## **SUMMER 2025 - WORKING GROUP**

- Close out current plan
- Strategize on processes for new plan

## **FALL 2025 - ROADMAP TASKFORCE**

- Campus Engagement
- Create new Mesa2030 Roadmap

## **SPRING 2026 - REVIEW AND APPROVALS**

## **FALL 2026 - ROADMAP IMPLEMENTATION**



# TIMELINE

		2025												2026																																												
		JUN					JUL				AUG			SEP				OCT			NOV			DEC			JAN			FEB			MAR				APR			MAY			JUNE															
		2	9	16	23	30	7	14	21	28	4	11	18	25	1	8	15	22	29	6	13	20	27	3	10	17	24	1	8	15	22	29	5	12	19	26	2	9	16	23	2	9	16	23	30	6	13	20	27	4	11	18	25	1	8	15	22	29
1	SUMMER																																																									
	Summer Workgroup Meetings						8				12																																															
2	FALL																																																									
	Opening Day Convocation										21																																															
	Taskforce Workshops													17				8				19				17																																
3	SPRING																																																									
	Reviews and Approvals																																																									



**Rooted in Purpose. Grounded in Equity. Growing Together.**

# YOUR PARTICIPATION IS KEY

We need your help – on taskforce AND outside today!



Rooted in Purpose. Grounded in Equity. Growing Together.

# MEASURE HH

VICE PRESIDENT LORENZE LEGAPSI



Rooted In Purpose. Grounded In Equity. Growing Together.







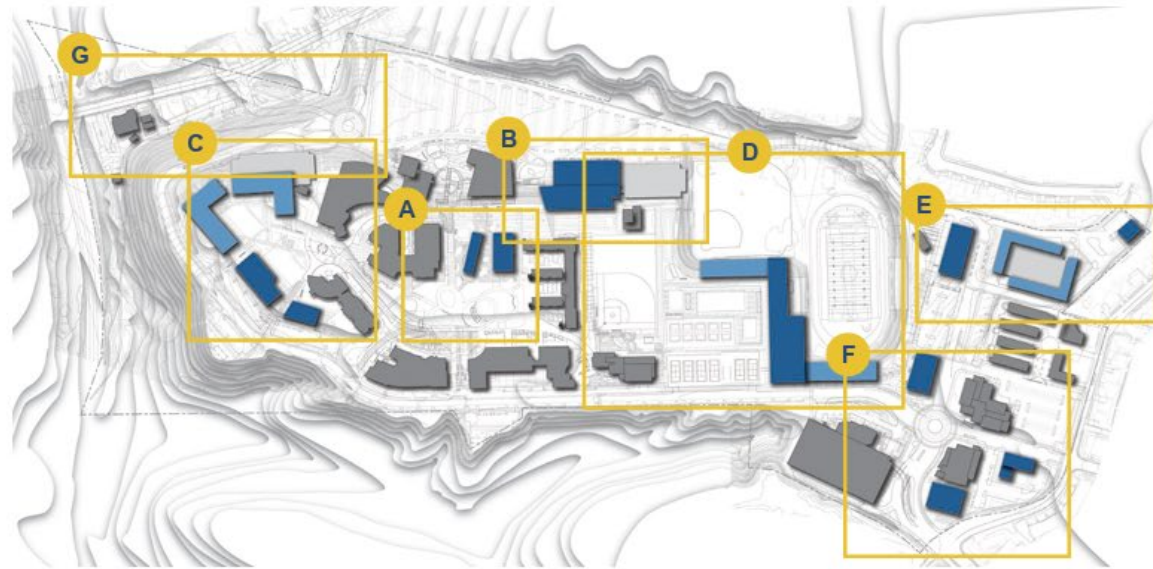
SAN DIEGO  
MESA COLLEGE

Measure HH: Phase 1

# Mesa2030 Projects

## PROJECT DESCRIPTIONS

- A** English / ELAC / Student Resource Center
- B** Performing Arts Complex + Administration
- C** Student Housing Option  
Conference Center
- D** Athletics/Exercise Science/Dance
- E** Student Housing Option  
High School  
Facilities
- F** Welcome Center  
Child Development Center  
Community Clinic
- G** West Entrance



A series of new facilities are proposed as part of Mesa2030. Project descriptions are included on the following pages and grouped as illustrated in the key plan.

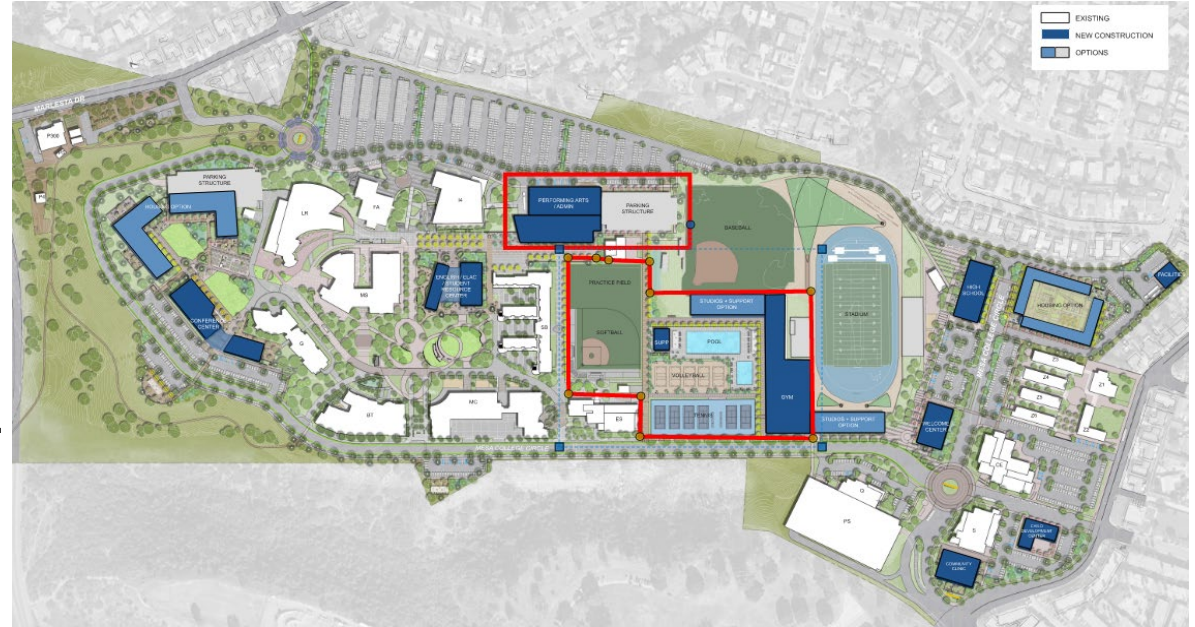
While drawings in the plan appear specific, the forms are conceptual sketches that indicate the location and purpose of recommended improvements. The final design of each site and facility project will take place as projects are funded and detailed programming and design takes place with a designated user group.

# Mesa College – Phase I

- **Projects**

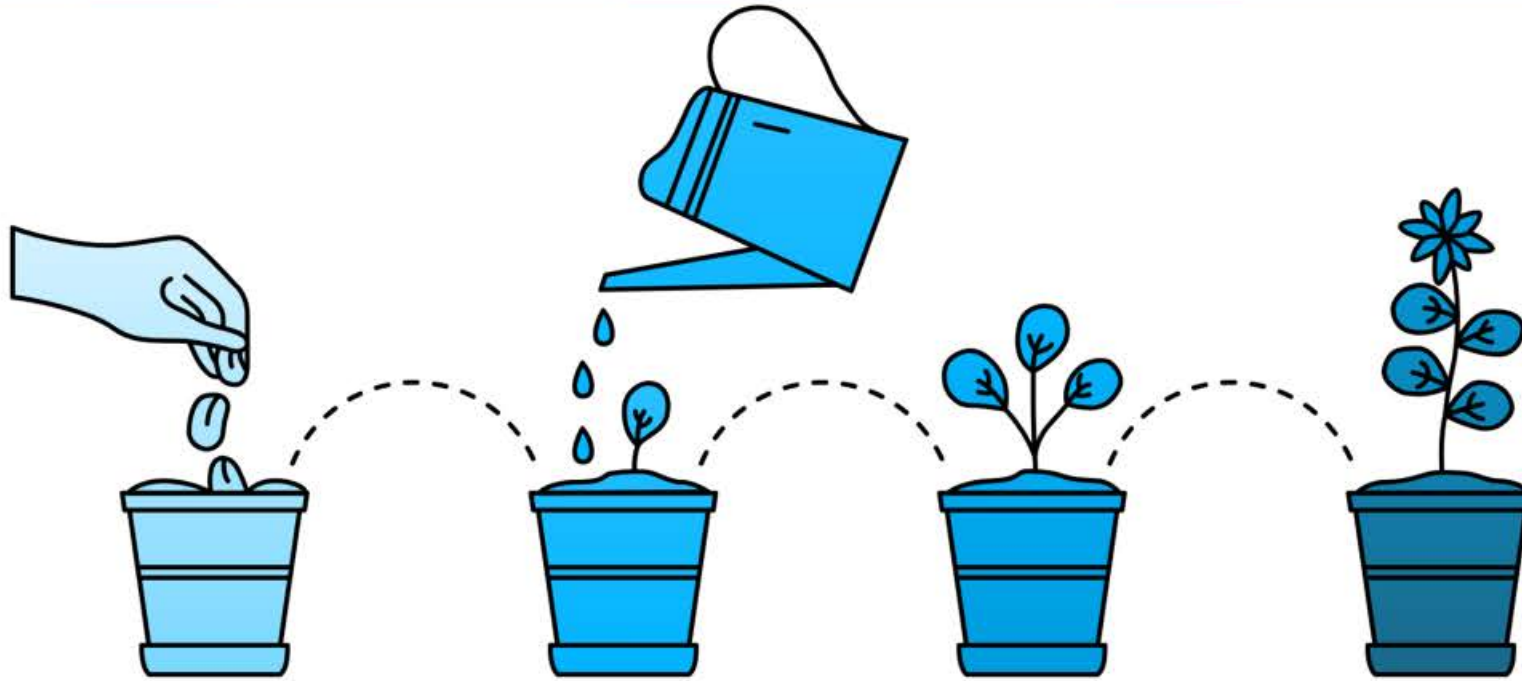
- **Sports & Kinesiology Sciences**
- **Performing Arts Center / Administration Offices & Parking Structure**

- Phasing determined by priority and sequencing logistics.
- Programming will begin Sept 2025 and run approx. 3-4 months.
- Weekly meetings with campus input will be crucial during this time.
- Site logistics, such as parking and swing space, to be discussed during the design phase.
- Construction to begin in 2027!





# STAKEHOLDER INPUT PROCESS



## Programming Phase

Identify education program requirements for the program

## Design Phase

Engage the College in developing design options that fulfill the educational program requirements.

## Design Validation

Validate consensus design with all Stakeholders

## Final Design

Approved and validated with Campus Leadership, District, and Shared Governance



# Tentative Project Timeline



## Sports & Kinesiology Sciences

Activity	Target Completion
Design	Winter 2026-2027
DSA Agency Review	Fall 2027
Phase 1: New Gym & Aquatic Center	Summer 2030
Phase 2: Demo Existing Gym & New Athletic Fields	Spring 2031

## Performing Arts Center / Administration & Parking Structure

Activity	Target Completion
Design: New Parking Structure	Summer 2026
Design: Performing Arts Center & Admin.	Winter 2026-2027
DSA Agency Review (Parking Structure)	Winter 2026-2027
DSA Agency Review (Performing Arts Center & Admin.)	Winter 2027-2028
Construction: New Parking Structure	Summer 2028
Construction: Performing Arts Center & Admin.	Fall 2030

# Capital Renovation and Repair Projects

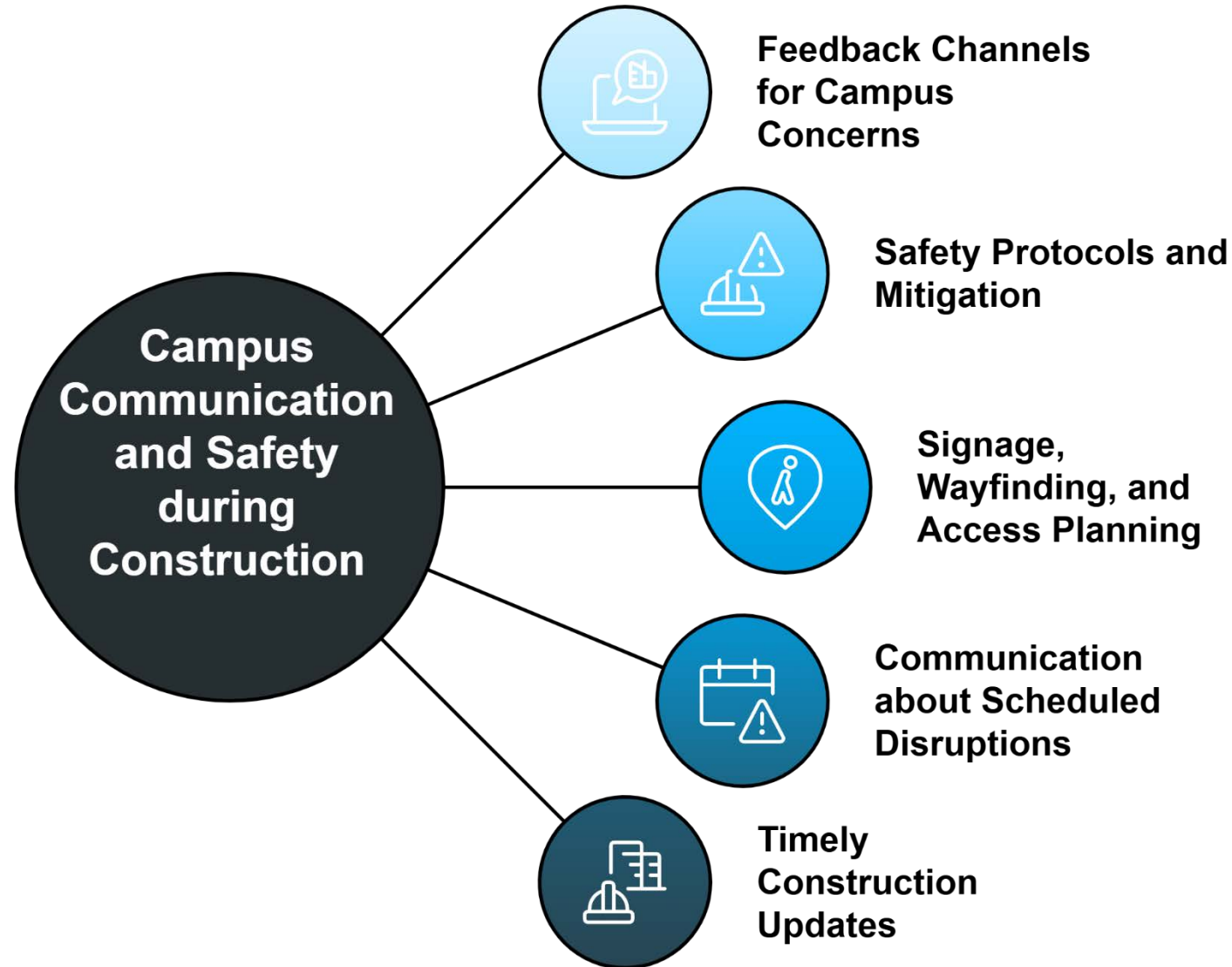


**SAN DIEGO**  
Community College District

<b>MESA COLLEGE</b>	
<b>Project(s)</b>	<b>Bid Est.</b>
Fire backflow replacement	5/18/26-6/18/26 (1month)
Lighting power panel (Musco)replace (6) light posts & wiring feeding	10/2/25-11/2/25 (1month)
LED Upgrade (Campus wide)	10/2/25-11/2/25 (1month)
Replace NW Roll-Up Entry, including Keypad	12/8/25-1/22/26 (1month)
Replace Boiler, Cooling Tower re-furbish, ALC Contols, units replacements	1/10/26-2/10/26 (1month)
Elevator mod (2) with fire alarm work, electronics / controls / wiring / motor	5/18/26-6/18/26 (1month) BOARD APPROVAL
Replace HVAC Units for telecom rooms	3/8/26-4/8/26 (1month)

<b>MESA COLLEGE</b>	
<b>Project(s)</b>	<b>Bid Est.</b>
Emergency Diesel Generator replacement	11/10/25-12/10/25 (1month)
Double door replacement (exterior equipment area)	11/10/25-12/10/25 (1month)
Roof - Fluid Applied (mech Equipment area)	10/6/25-11/9/25 (1month)
Roof replacements	12/8/25-1/22/26 (1month)
Roof concrete patio area	11/10/25-12/10/25 (1month)
Replace lighting Inverter	11/9/25-12/18/25 (1month)
Intrusion Alarm System and components replacement	5/18/26-6/18/26 (1month)

# WHAT TO EXPECT DURING A PROJECT



# Measure HH Communication



- **Project Profiles**

- Will be updated monthly and available to the public. These can be accessed through the SDCCD Website:

[https://www.sdccd.edu/departments/operations/measurehh/project\\_profiles.aspx](https://www.sdccd.edu/departments/operations/measurehh/project_profiles.aspx)

- **Newsletters**

- First newsletter will be issued in August 2025 and will continue on a monthly basis.

MESA COLLEGE SPORTS & KINESIOLOGY SCIENCES

Project Overview

Current Status /Phase

Procurement

Construction Type

New Construction & Demo

Gross Square Footage

100,000 SF

Division of State Architect

Yes

Construction Method

Progressive Design-Build

Contract Start Date

September 11, 2025

Contract Expiration Date

TBD

Project Financials

Funded By

Measure HH

Project Teams

Landscape Architect

TBD

Structural Engineer

TBD

Electrical Engineer

TBD

Civil Engineer

TBD

Mechanical Engineer

TBD

SDCCD Project Manager

Sam Garcia (Kitchell)

Construction Manager

Steve Evanco

DSA Inspector

TBD

Contractor

TBD

Site Detail

Campus

Mesa College

Coordinates

32°48'16.99"N 117°10'7.73"W

Project Schedule

Programming & Planning

Design & DSA Approval

Construction Completion

FFE & Move-In

Ph 1: Fall 2025/Spring 2026

Fall 2027

Winter 2030

Spring 2030

Ph 2: Fall 2025/Spring 2026

Fall 2027

Winter 2031

Spring 2031

Project Insight

Project is currently in the RFQ/P Phase

• 6/5/25: RFQ/P Published

• 7/16/25: RFQ/P Submission Deadline

• 8/25/25: Issuance of Notice of Intent to Award

• 9/11/25: Board Approval

• 9/17/25-9/30/25: Project Kickoff Meeting

• Fall 2025: Start of Programming & Design

\*Ph 1= New Gym & Aquatic Center

\*Ph 2= Buildings L1, L2 and Old Gym Demolition and New Softball/Practice Field

Project Features

The Mesa College Sports & Kinesiology Sciences Project will replace outdated and inefficient athletic, exercise science, and dance facilities with approximately 70,000 ASF of new construction and modernized infrastructure to meet current and future program needs. Anchored by a new three-court gym located between the upper and lower zones near the existing parking structure, the complex will include dance studios, athletic training areas, study spaces, locker and team rooms, equipment storage, and administrative offices. The project also features an expanded Aquatics Center supporting lifeguard and water safety training, replacing a 50-year-old pool, along with new beach volleyball courts, relocated softball and practice fields, and improved pedestrian connections across campus. Demolition includes the existing gym, shower/locker facility, and pool, totaling over 139,000 SF. Additional scope includes new site utilities, landscaping, accessible pathways and parking, curb and gutter improvements, and signage—all aligned with the college's Master Plan to improve equity, connectivity, and community access.

Project Site Plan

EXISTING CAMPUS

<

# Thank You!



# **COMPREHENSIVE FUNDRAISING CAMPAIGN**

**DIRECTOR KRISTA STELLMACHER, CFRE**



Rooted In Purpose. Grounded In Equity. Growing Together.



# Mesa's Comprehensive Campaign -

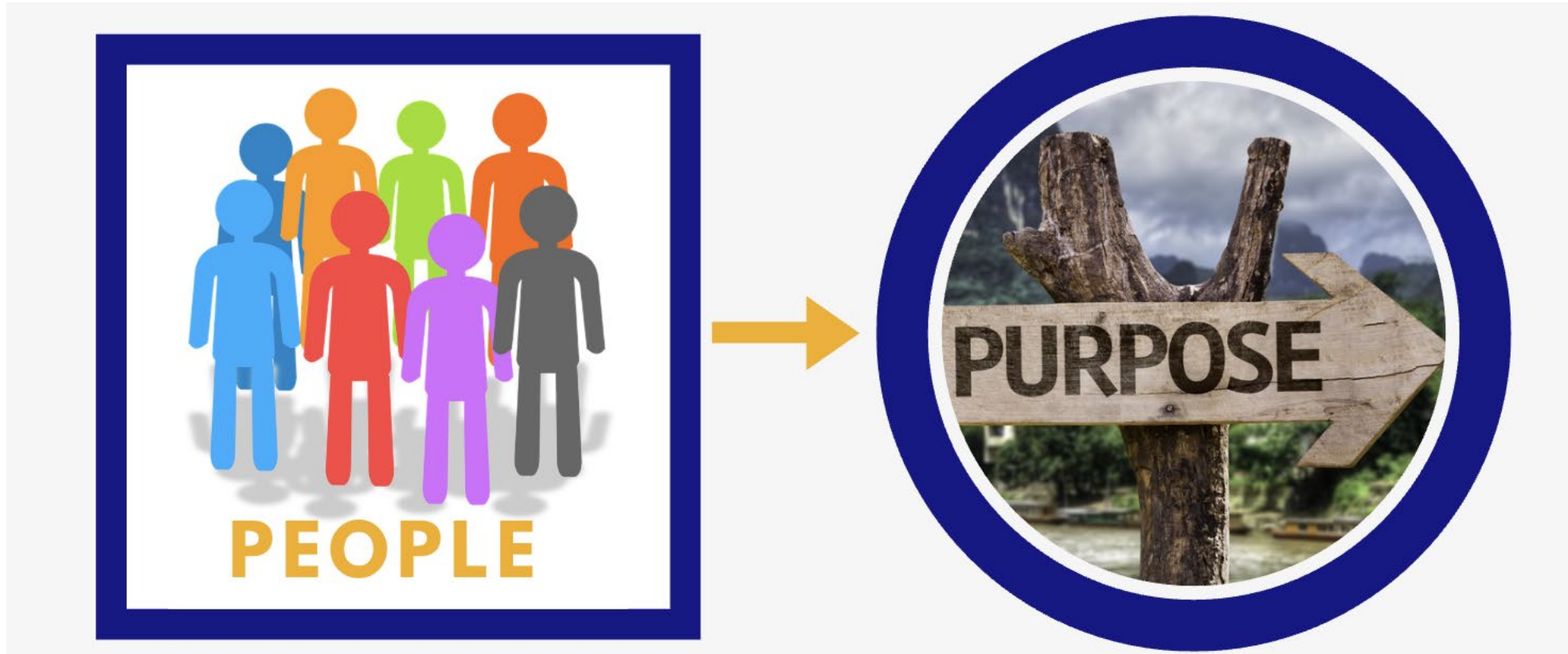
---



Rooted in Purpose. Grounded in Equity. Growing Together.

# Mesa's Comprehensive Campaign -

---



Rooted in Purpose. Grounded in Equity. Growing Together.

# Case Studies

---



Cuyahoga  
Community  
College



**SB  
CC**  
SANTA BARBARA  
CITY COLLEGE



---

Rooted in Purpose. Grounded in Equity. Growing Together.

---



# Case Studies - What Can We Learn?

---



Big Priorities  
Inspire Big Gifts



Long Term  
Relationships



Team  
Effort



---

Rooted in Purpose. Grounded in Equity. Growing Together.

---



# Mesa's Comprehensive Campaign - The Approach

---



Initial Outreach



Quiet Phase



Case for Support



Rooted in Purpose. Grounded in Equity. Growing Together.

# Mesa's Comprehensive Campaign - The Story

## Version 1

The San Diego Mesa College Foundation supports students by offering scholarships, food, school supplies, emergency grants, and other basic necessities to students, and mini-grants to faculty and classified professionals on the campus to pursue ideas that promote success.

- 3 feet
- The What

## Version 2

- Invest in Bright Futures  
*Scholarships*
- Preserve Opportunity & Belonging  
*Resiliency Fund*
- Enrich Through the Arts  
*World Art Collection*
- Fund Innovation  
*Innovation Grants*  
*Support for Campus Initiatives*

- 10,000 feet
- The How

## Coming Version



- 50,000 feet
- The Why

# Gathering The Story - District & Mesa

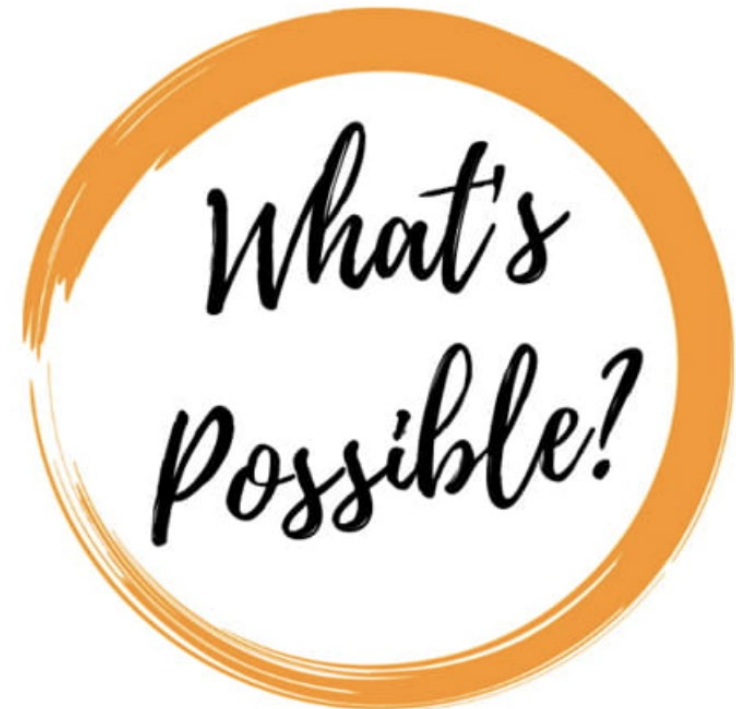
---

## District [DRAFT]

- The Cost of Going to College
- Basic Needs: Housing, Food, Childcare
- Innovation in Teaching, Learning, & Assessment
- Support to Individual Colleges

## Mesa

- Co-Dream



# Share Your Perspective



Rooted in Purpose. Grounded in Equity. Growing Together.



# Spirit of Mesa

*This Moment, Our Mission*



Friday, October 10, 2025

1

Sponsors

2

Guests

3

Auction Items



Rooted in Purpose. Grounded in Equity. Growing Together.



4



# Spirit of Mesa

*This Moment, Our Mission*

SEEKING STUDENT TALENT

We want to shine a light on you!

**You could be featured:**

- Onstage live at Mesa events
- As an event ambassador
- In a video
- On a poster
- On social media



Share your story or talent



Sign up by 8/31

Scan to participate

[bit.ly/SOM-StudentTalent](https://bit.ly/SOM-StudentTalent)



# Spirit of Mesa

*This Moment, Our Mission*

Seeking Student Talent

Nominate Students & Alumni Who Inspire You

**They could be featured:**

- Onstage live at Mesa events
- As an event ambassador
- In a video
- On a poster
- On social media



Shine a spotlight on students



Sign up by 8/31

Scan to nominate

[bit.ly/SOM-Nominate](https://bit.ly/SOM-Nominate)



Rooted in Purpose. Grounded in Equity. Growing Together.

# VICE PRESIDENT **UPDATES**



---

Rooted in Purpose. Grounded in Equity. Growing Together.

---

# **INSTRUCTIONAL UPDATES**

**Dra. Isabel de los Angeles O'Connor**  
**Vice President of Instruction**





Student Alexis Grey with her peers at an event for the Mesa Impactship program. Photo courtesy Mesa College



# INSTRUCTION



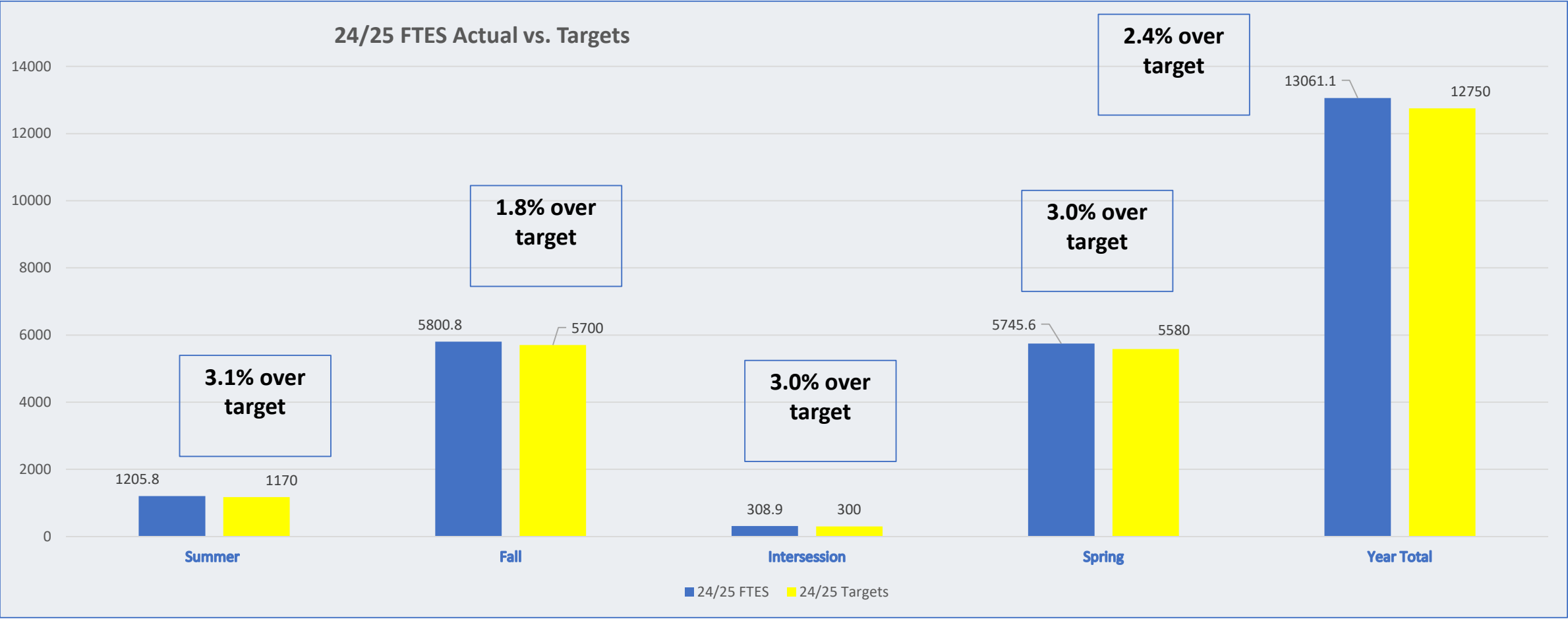
**Dra. Isabel de los Angeles O'Connor**  
**Vice President of Instruction**

**President, California Community  
 Colleges Chief Instructional Officers**





# 2024-2025 Enrollment Data



# 2025-2026 Instructional Projects

A solid yellow triangle is positioned in the bottom right corner of the slide, pointing towards the top right.



- New Attendance Accounting Method Implementation
- Adult Learners Enrollment Management Plan
- Common Course Numbering Phase II
- Credit for Prior Learning
- Mesa Impactship
- Bachelor's Degree

# **STUDENT SERVICES UPDATE**

## **VICE PRESIDENT LARRY MAXEY II**



Rooted In Purpose. Grounded In Equity. Growing Together.



# Student Services

---

Fall 2025

*This is How We  
Do It!*





# We do it, Together... Rooted in Equity & Excellence !





# Student Services

## The Squad!



Victoria Kerba Miller  
Dean of Student Affairs



Dr. Cynthia Rico  
Dean of Student  
Development



Leticia Diaz  
Dean of Student  
Success & Equity



# **The Year of Transfer 2025/2026**

**The Leading Transfer  
Institution**

**Transfer Partners**

**Transfer Events**

**Challenge Ourselves**





**What: Stay Rooted  
So What: We are the Leaders  
Now What: Lets do it, together!**





# **ADMINISTRATIVE SERVICES UPDATE**

## **VICE PRESIDENT LORENZE LEGASPI**



Rooted In Purpose. Grounded In Equity. Growing Together.

**WELCOME!**

**ADMINISTRATIVE SERVICES**

**VICE PRESIDENT LORENZE LEGASPI**



Rooted in Purpose. Grounded in Equity. Growing Together.

# INTRODUCING NICOLE ROESLER

Director, Administrative Services



- 25 years in non-profit and public sector finance
- Combination of technical expertise and humanizing the 'work'
- Passion and expertise in process creation and transparency



Rooted in Purpose. Grounded in Equity. Growing Together.



# UPDATES

New Business Card Request Process

Requisition Entry

New Contract Process

Student Accounting

Technology Support

Print and Mail Services

Safety / Campus Police

Business Services



Rooted in Purpose. Grounded in Equity. Growing Together.

# OLYMPIAN SPIRIT **AWARDS**



Rooted in Purpose. Grounded in Equity. Growing Together.

# CHAMPIONS OF DEDICATED SERVICE

Guadalupe Bueno

Allison Crakes

Karina Dam

Erick Escalante

Vanessa Ortega

Eva Parrill

Liza Rabinovich

Pahua Vang



Rooted in Purpose. Grounded in Equity. Growing Together.

# CHAMPIONS OF EFFICIENCY AND EFFECTIVNESS

Nacara Jo Akins  
James Gappy  
Karina Sandoval  
Victoria Vela



---

Rooted in Purpose. Grounded in Equity. Growing Together.

---



# CHAMPIONS OF EQUITY AND INCLUSION

Eddie Landeros  
Austin Tran  
Derrick White



---

Rooted in Purpose. Grounded in Equity. Growing Together.

---

# CHAMPIONS OF VISION AND INGENUITY

Justin Batenga  
Jordyn Smiley



---

Rooted in Purpose. Grounded in Equity. Growing Together.

---

# **SDCCD UPDATES**

**Geysil Arroyo, President, Board of Trustees**

**Greg Smith, Chancellor**

**Jim Mahler, President, AFT Guild Local 1931**



---

**Rooted in Purpose. Grounded in Equity. Growing Together.**

---

# BREAKOUT SESSIONS AND LUNCH

**10:30 a.m. - 10:40 a.m.**

Breakout Instruction and Transition Time

**10:40 a.m. - 11:25 a.m.**

Breakout Sessions I

**11:25 a.m. - 11:30 a.m.**

Transition

**11:30 a.m. - 12:15 p.m.**

Breakout Sessions II

**12:20 p.m. - 1:00 p.m.**

Lunch and Fun on the Mesa Quad



**AFTER BREAKOUT SESSION II ENDS,  
PLEASE MEET AT THE QUAD FOR  
LUNCH PROVIDED BY LOS CHUCHYS,  
GELATO PROVIDED BY MESA  
CULINARY, AND CARNIVAL GAMES**



Rooted in Purpose. Grounded in Equity. Growing Together.